

Hepburn Regional Park

Storm damage update – Spring 2023



Great news! Tipperary Springs Day Visitor Area is open again for everyone to enjoy.

We've invested \$62,000 to improve the picnic area, clean up storm debris, create an all-abilities path from the car park to the mineral spring, and enhance the landscaping.

Unfortunately, all walking tracks from Tipperary Springs are still closed.

Hepburn Regional Park is making progress towards fully reopening, but many walking trails and parts of the Goldfields Track are still closed.

Parks Victoria and DJAARA are working to reopen these areas soon. For help planning your visit, please check the information below.

Visitor Areas	Status
Golden Spring Mineral Spring	Open
The Blowhole	Open
Bryces Flat	Open
Twin Bridges	Open
Sailors Falls Picnic Area and steps to the base of the falls	Open
Mount Franklin (Lalgambuk) Day Visitor and Camping Area	Open
Tipperary Springs Day Visitor Area	Open

Walking Trails	Status
Golden Spring to Hepburn Mineral Springs Reserve (via Jacksons Lookout)	Open
Hepburn Mineral Springs Reserve to Argyle Spring	Open
Mount Franklin (Lalgambuk) Circuit walk	Open
Goldfields Track – North of Jacksons Lookout and South of Twin Bridges	Open
Mineral Springs Loop Walk, Sailors Falls	Closed
Twin Bridges to Bryces Flat (both sides of Sailors Creek including Goldfields Track)	Closed
The Blowhole to Golden Spring walking track	Closed
The Blowhole walking track loops	Closed



Pictured above: Improved Tipperary Springs car park

We acknowledge the impact that park closures have on both the community and visitors.

While these closures may be inconvenient, they are necessary to ensure everyone's safety and to allow for the recovery of the park.

The 2022 floods and storms have had a significant impact on more than 80 parks, and in many cases the same processes are needed to complete these steps across the state.

During this time, it's important for all park-goers to respect the location closures that are there to support everyone's safety.

Parks Victoria will provide an update when changes occur.

Steps to re-opening

Parks Victoria and DJAARA are undertaking multiple steps to reopen flood and storm affected parks:

1. Assessments – Local rangers aim to protect visitors from known and foreseeable risks. We are awaiting some assessments which require complex technical experts and advice.
2. Aboriginal cultural heritage protection – This park is jointly managed with DJAARA and is rich with tangible evidence of Aboriginal use and occupancy. A dedicated team has been put in place and is working to ensure recovery efforts cause no further harm to Aboriginal cultural heritage.
3. Recovery and rehabilitation works - once technical assessments are complete, we move on to repair and rehabilitation work. Our staff have the tools and expertise to carry out many recovery tasks themselves, however, some tasks can only be undertaken by qualified contractors with specialised machinery.

Pictured on the right, are some examples of the current closures in place.

Top: Track closure on Sailors Falls loop walk.

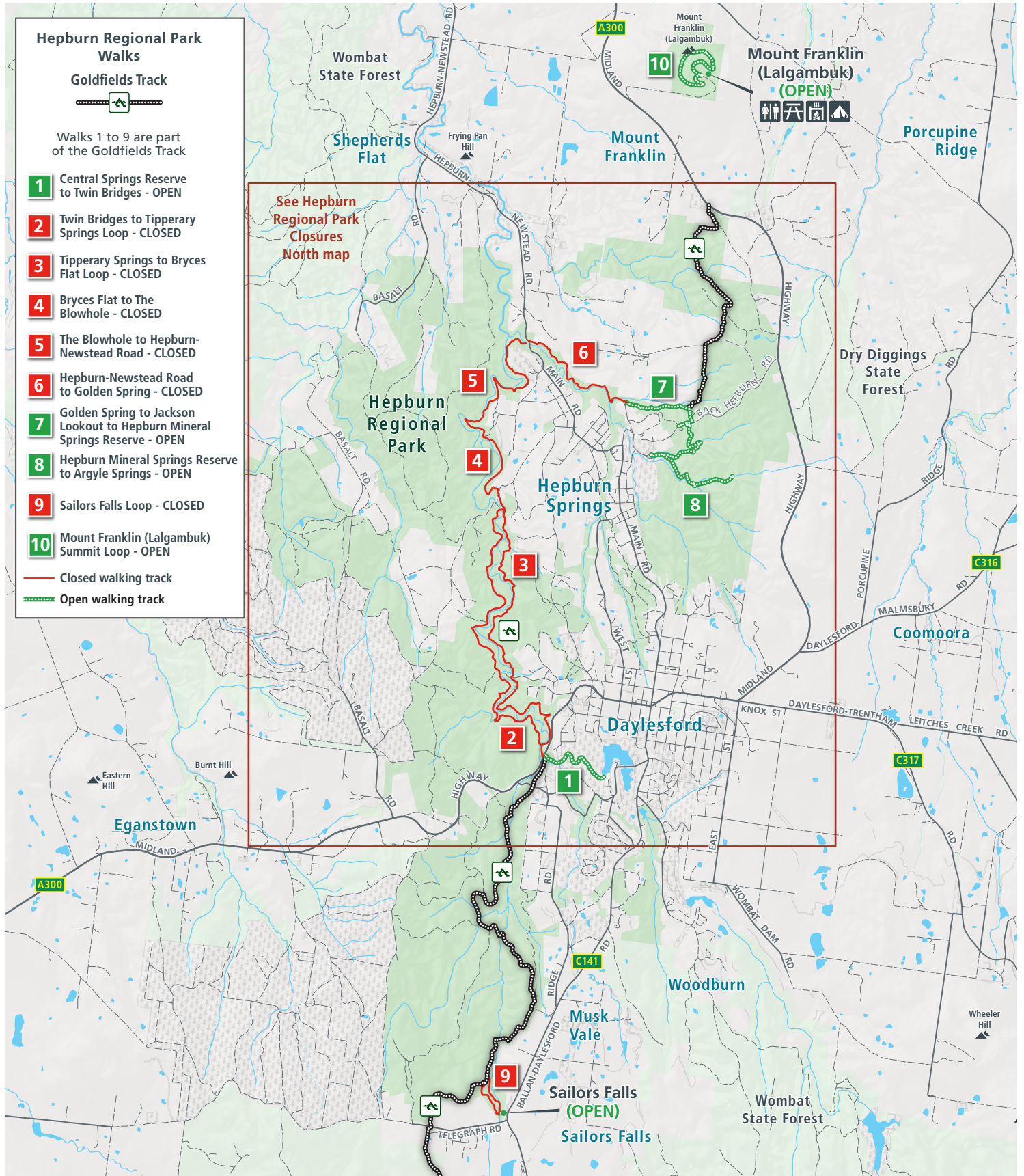
Bottom: Track closure at Twin Bridges walking track leading to Tipperary Springs.

For the latest information on Hepburn Regional Park please check the website parks.vic.gov.au or if you wish to report damage to closure signs please contact rangers on info@parks.vic.gov.au



Hepburn Regional Park Closures

Overview



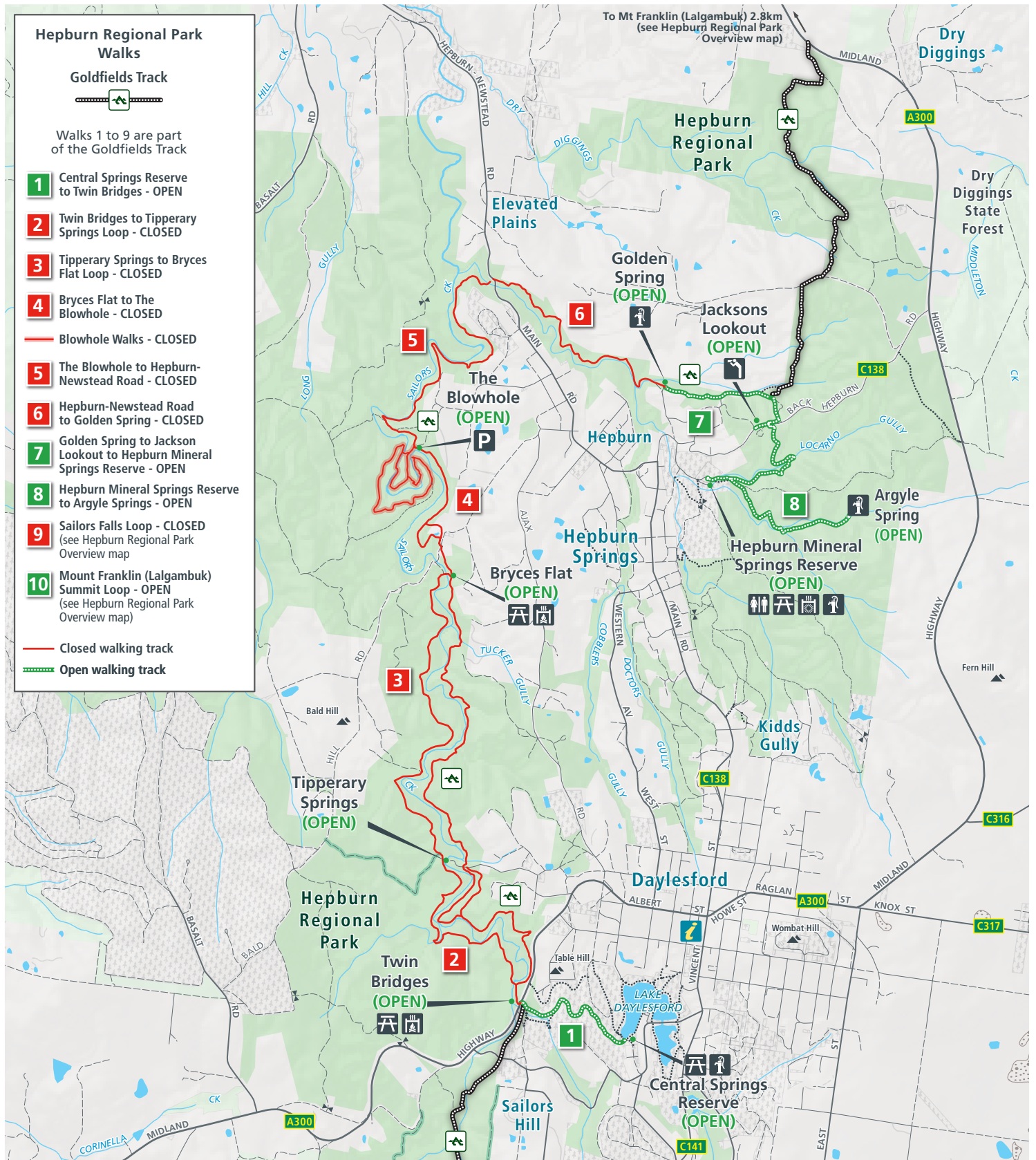
- Toilet
- Picnic
- BBQ (wood)
- Camping
- Highway
- Main road
- Sealed road
- Unsealed road
- Hepburn Regional Park
- Other reserve
- Softwood plantation



0 1 2 3 Kilometers

Hepburn Regional Park Closures

North



- ### Hepburn Regional Park Walks
- Goldfields Track**
-
- Walks 1 to 9 are part of the Goldfields Track
- 1** Central Springs Reserve to Twin Bridges - OPEN
 - 2** Twin Bridges to Tipperary Springs Loop - CLOSED
 - 3** Tipperary Springs to Bryces Flat Loop - CLOSED
 - 4** Bryces Flat to The Blowhole - CLOSED
 - Blowhole Walks - CLOSED
 - 5** The Blowhole to Hepburn-Newstead Road - CLOSED
 - 6** Hepburn-Newstead Road to Golden Spring - CLOSED
 - 7** Golden Spring to Jackson Lookout to Hepburn Mineral Springs Reserve - OPEN
 - 8** Hepburn Mineral Springs Reserve to Argyle Springs - OPEN
 - 9** Sailors Falls Loop - CLOSED (see Hepburn Regional Park Overview map)
 - 10** Mount Franklin (Lalgambuk) Summit Loop - OPEN (see Hepburn Regional Park Overview map)
- Closed walking track
 — Open walking track

- | | | | | |
|----------------|---------------------|---------------|------------------|-----------------------|
| Parking | BBQ (Wood) | Highway | 4WD track | Hepburn Regional Park |
| Toilet | Mineral spring | Main road | Walking track | Other reserve |
| Picnic | Lookout | Sealed road | Seasonal Closure | Softwood plantation |
| BBQ (Electric) | Visitor information | Unsealed road | Gate | |

