

# Brush-tailed Phascogale

## Terrific tree climbers

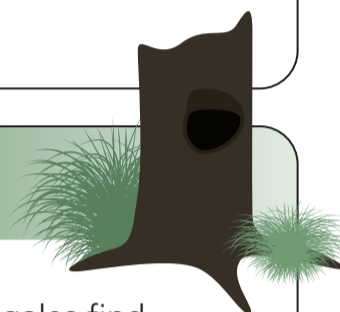


### Habitat



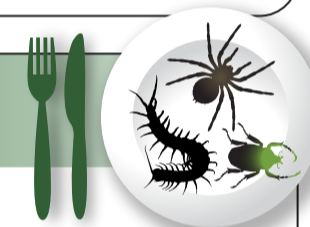
Brush-tailed Phascogales love the dry forests of Central Victoria. These forests have lots of open ground, tall gum trees and not many shrubs.

### Shelter



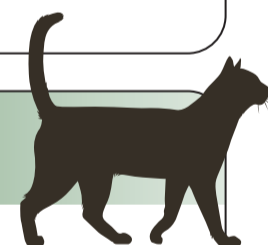
Brush-tailed Phascogales find shelter inside hollows, which are holes that form in old trees. They use fur, feathers and leaves to build a messy, cosy nest.

### Food



Phascogales munch on insects, spiders and centipedes at night time. Sometimes they even catch small birds and lizards! In spring, they sip nectar from tree flowers.

### Protection



Protecting dry forests from logging helps these marsupials to find shelter and food. Making sure cats stay inside also keeps phascogales safe from predators.

### Care



While waiting for hollows to form, phascogales will sometimes live in nest boxes that rangers and friends put in trees. How could you be a friend to wildlife?

## Features

### Brush-tailed Phascogales:

- Have a black, bushy tail and grey body
- Are small marsupials whose babies grow in a pouch
- Use their big eyes and ears to climb trees at night
- Use sharp claws and teeth to catch their food
- Are about as long as three \$20 notes
- Weigh about as much as a big orange
- Are cousins of the Tasmanian Devil

