

Community Update

Plenty Gorge Park Fire Recovery

26 June 2020
Issue 6

The recovery and rehabilitation of Plenty Gorge Park is continuing following the December 2019 bushfire. Some park closures remain in place to protect our important park values and to ensure the safety of visitors.

Protecting values for generations to come

Wurundjeri people have, on a seasonal basis, visited the area now known as Plenty Gorge Park for tens of thousands of years. The fire and its suppression work have exposed important, and previously unregistered cultural material that is associated with this occupation.

Parks Victoria has engaged a Cultural Heritage Advisor with assistance from Wurundjeri to survey the affected area. Unregistered cultural material located during the survey is now being formally registered.

Parks Victoria continues to work with Wurundjeri to obtain the necessary permits to rehabilitate the six kilometres of bulldozer-built containment line that was constructed during the fire suppression effort.

Although it may not appear that much is going on from afar, the detailed survey and recording process is taking place, preserving history for future generations.

Reopening more of the park

Parks Victoria recognises how important the park is to the community and the higher than normal demand for open space at present. With the assistance and ongoing support of the Plenty Gorge Mountain Bike Club we have reopened more trails in the north and east areas of Yellow Gum Picnic Area. Trails that remain closed for now are clearly signed on site. Whilst the area surrounding Goldsworthy Lane will be open to the public, the main gate will still be closed to vehicle access. Please keep this in mind if visiting the park by car.

The local community has been supportive of Parks Victoria's staff during the recovery process by observing and calling out illegal access to closed areas, removal of signage or others bringing dogs into these areas. Thank you! Please continue to report these activities to Parks Victoria via info@parks.vic.gov.au or 13 1963.

Next steps

Parks Victoria anticipates rehabilitation works on containment lines will commence in the next 4-6

weeks. It will begin when the archaeological survey and recording process has been completed and the necessary cultural heritage permits have been finalised.

As rehabilitation of these lines is done by heavy machinery, public access will be temporarily restricted for visitor safety.

Visit more of Plenty Gorge

While some park closures still apply in the southern section of the park, other areas of Plenty Gorge Park are open and waiting to be explored. Morang Wetlands in South Morang has a network of trails to venture down. Walk between large river red gums and keep an eye out for the many different birds that call this area home. Access to this area can be gained from the end of Wiltonvale Road, South Morang, an easy walk.

Visit the Plenty Gorge Park page for more information on walks within the northern parts of the park.

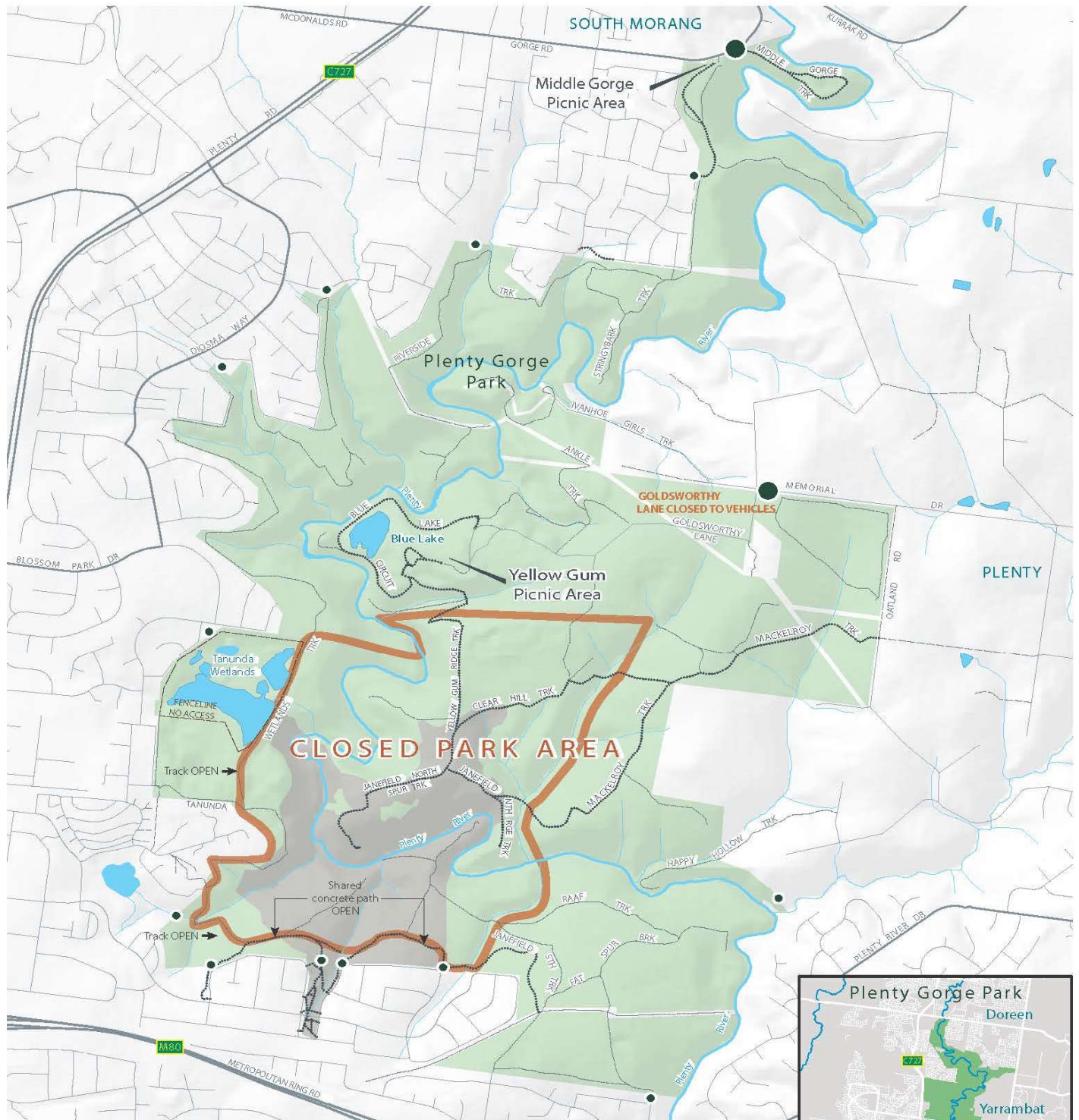


More information

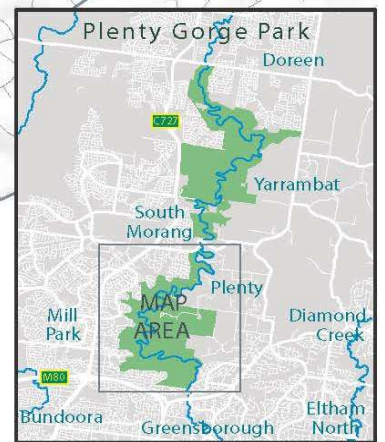
For information on past and future planned burns and the location of our annual slashing program in Plenty Gorge visit the interactive map at ffm.vic.gov.au/jfmp (turn on 'fire history' and 'mechanical works' layers).

Visit the Plenty Gorge Park page at www.parks.vic.gov.au for information about things to do in the park or call 13 1963.

Plenty Gorge Park South - Closed Park Area



- Plenty Gorge Park
- Closed Park Area
- Burnt Area
- Vehicle Entry Point
- Pedestrian Entry Point
- Fwy/Hwy
- Main road
- Sealed road
- Unsealed road
- Walking track



www.parks.vic.gov.au
 Disclaimer: Parks Victoria does not guarantee that this data is without flaw of any kind and therefore disclaims all liability which may arise from you relying on this information. Cartography by Parks Victoria February 2020
 For mobile App search for Avenza PDF Maps



Please observe the new trail closure boundaries which are clearly marked with signage onsite.