

# COMMUNITY UPDATE

St Kilda Pier  
Redevelopment

Edition 7 – August 2022



## Construction update

In partnership with the Department of Transport, we're delivering the exciting rebuild of the iconic St Kilda Pier. Once complete, the new pier will provide improved recreational space and access out onto the bay, improved views of St Kilda and the city skyline and better protection and viewing area for the Little Penguins.

Construction is underway, with a large site compound in place near the start of the pier and in Catani Gardens, which allows surrounding cafes, shops and other businesses and the Sea Baths carpark to remain open. The Bay Trail also remains open for cyclists, walkers and runners to continue enjoying the area

## Making progress

Steel piles are being used for the new pier which will provide strength and durability. Since starting onsite earlier this year, our crews have been hard at work driving the piles along the new pier alignment and the new penguin viewing area. This has seen all 65 piles installed for the penguin boardwalk and over 50 piles installed on the beach side of the new pier alignment.

Removal of the old timber deck to the south of the kiosk was recently completed with the timber salvaged for reuse to build seating on the new pier. With this deck section gone, scaffolding

allows Parks Victoria staff and a dedicated team of volunteers from Earth Care St Kilda to continue penguin monitoring.



Figure 1 Decking next to the kiosk has been removed

As shown in the image below, pre-cast concrete headstocks have started to be installed on the steel piles. These will form the foundation of the pier structure which will feature a combination of concrete and hardwood timber decking.



Figure 2 Pre-cast concrete headstocks are being installed along the alignment of the new pier

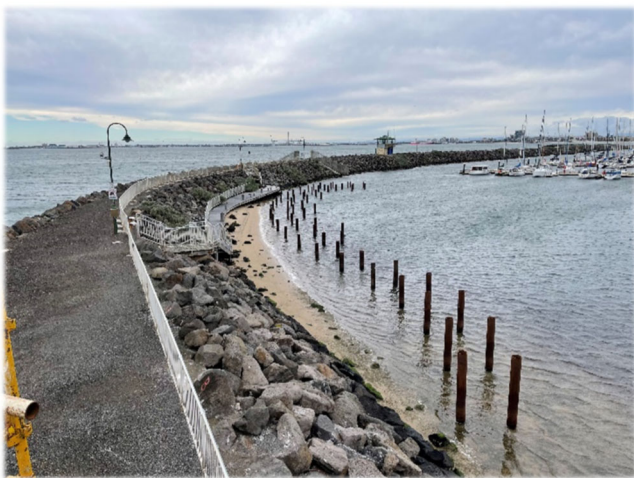


Figure 3 Piles have been installed for the new penguin viewing boardwalk (August 2022)

## Upcoming works

Over the coming months, we'll continue driving in steel piles along the new pier alignment and relocate the foreshore rock groyne/breakwater. Headstocks and the concrete panels which span between them will continue to be installed.

## Protecting St Kilda Pier's Little Penguins

Protected as part of a Wildlife Management Cooperative Area, St Kilda Pier's breakwater is home to a colony of approximately 1,300 Little Penguins. Given its ease of access to people living or holidaying in Melbourne, over the past ten years, we've observed an extraordinary increase in visitor numbers to view the penguins. This is despite no active promotion or provision of dedicated facilities. The pier redevelopment has given us the opportunity to improve environmental protection and enhance visitor experience. Visit the project website to learn more.



Figure 4 - park rangers and volunteer experts from EarthCare St Kilda are continuing to access the breakwater to monitor the penguins

## Enjoying the seaside playground safely

St Kilda Pier is in a unique environment, with a long and narrow project site in one of Melbourne's most popular outdoor playgrounds. Works are being undertaken from barges and work boats and will involve piling and general construction activities in the water.

As spring and summer start to arrive, whether you're swimming, on a boat, personal watercraft/Jet Ski, kayak or kite surf it's important to understand the safety rules in place around the project.

- There is an 100m marine exclusion zone around the project worksite – enacted as on water works are underway. All vessels and swimmers must not enter this zone.
- Observe all speed limits and boating/swimming zones around St Kilda Pier - including 5 knot speed zones within 200m from shore and 50m from a structure, another vessel or person.
- Diving from St Kilda Pier is illegal and extremely dangerous. Always enter the water from the beach or use ladders provided. Swimmers are encouraged to use the beach adjacent to St Kilda Lifesaving Club 400m south of St Kilda Pier which is patrolled in summer.



Figure 5 Please be aware of boating zones and exclusion zones this summer

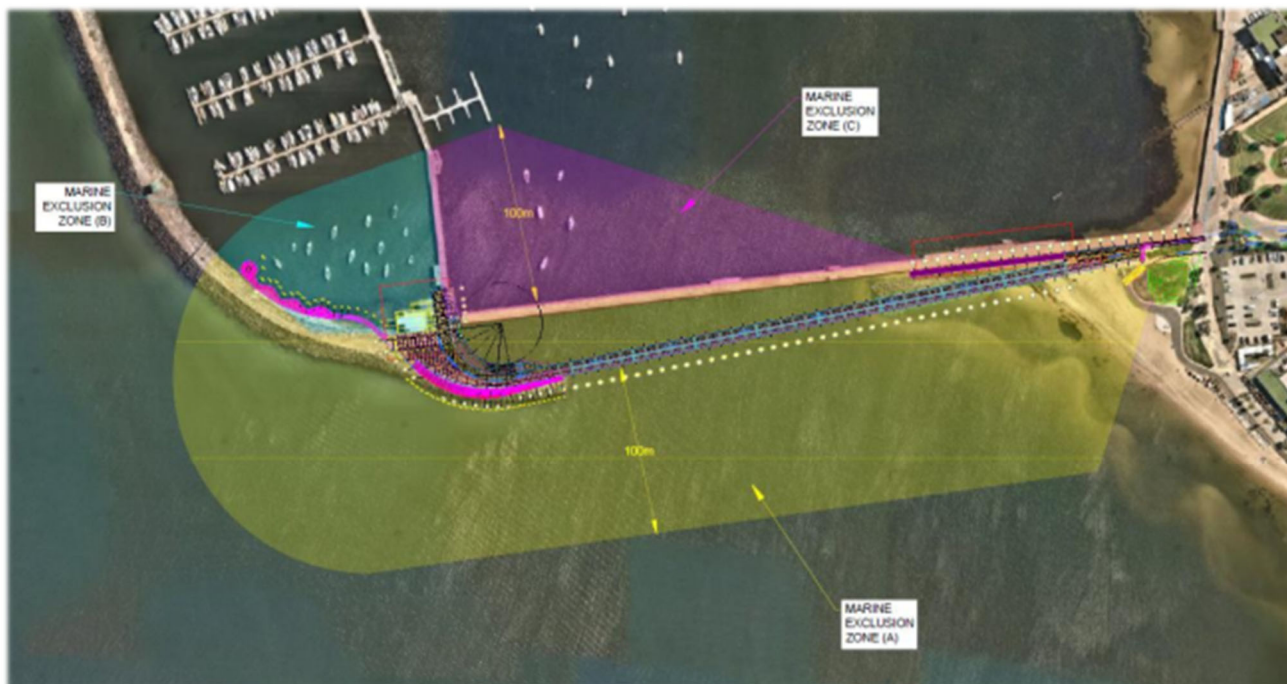


Figure 6 An access exclusion zone is in place

## Construction impacts and closures

We're seeking to minimise impacts and inconvenience where possible and appreciate your patience as we deliver this critical and exciting project.

- Where safe and practical, access to the existing pier and marina will be retained while the new pier is being constructed on a new alignment.
- Work hours will be Monday to Friday, 7:00am to 6:00pm. To minimise disturbance to weekend trading and events, work on Saturdays between 7:00am and 1:00pm will be used as a contingency only.
- Pile driving work is likely to cause periods of moderate noise. Condition reports for surrounding structures have been undertaken.
- Public viewing of St Kilda's famous colony of Little Penguins will remain closed during construction. Parks Victoria and EarthCare St Kilda will provide regular monitoring and care for the colony throughout construction.
- Pier Road will remain open to the Sea Baths carpark from Jacka Boulevard. Access to the Royal Melbourne Yacht Squadron and north of St Kilda Pier will be available via Pier Road from the north (Beaconsfield Parade entrance). Onsite signage is in place.
- Cyclists and trail users should be aware that a slight detour of the Bay Trail will be necessary at times during construction. An asphalt trail has been constructed around the perimeter of the construction compound for use when a Bay Trail detour is required.

To ensure neighbours and visitors are aware of these impacts, we are working with City of Port Phillip, an established stakeholder reference group, local businesses and other stakeholders to

consider the construction program and resolve potential impacts. We'll also keep you informed via the project website and project updates.



### Cafes and shops open

The Seabaths carpark and business precinct remain open. Thank you for supporting local traders during the pier construction works

### Pier access and restrictions

St Kilda Pier is currently open to the public. The breakwater and penguin viewing area are currently closed.

## Project timeline

August 2022 – Piling works continue from water

August 2022 – Relocation of the foreshore rock groyne

Late 2022 – Continued installation of precast concrete headstocks and deck panels

Start 2024 - Mid 2024 – Completion of new pier. Deconstruction of the existing pier will commence following completion of the new pier

### Sign up for email updates

For more design images and to sign up for the latest email updates, visit

[www.parks.vic.gov.au/projects/st-kilda-pier-redevelopment](http://www.parks.vic.gov.au/projects/st-kilda-pier-redevelopment)